



# Competition Rules

## Prints

- There are two print sections - Large Prints and Small Prints.
- All prints must be mounted and clearly marked on the back with the member's competition number in the top left hand corner with the title below.
- Large Prints shall have a minimum size of 20 x 25.5 cm and a maximum size of 40 x 50 cm
- For large prints the maximum mount size is 40 x 50 cm
- Small Prints shall have a minimum size of 12.5 x 18 cm and a maximum size of 20 x 25.5 cm
- For small prints the maximum mount size is 20 x 25.5 cm

## Projected Images

- Projected images includes slides and digital projected images

### 1. Digital Projected Images

- Digital projected images may be enhanced or manipulated using image editing software, but the original image must have been made by the entrant.
- The maximum horizontal dimension is 1024 pixels and the maximum vertical dimension is 768 pixels. Files must be saved as 8 bit JPEG and sRGB colour space, saved at a suitable JPEG quality to give a file no greater than 500 Kb. For a tutorial on how to resize images correctly click on <http://www.coriobaycameraclub.org.au/wp-admin/post.php?action=edit&post=191> Resizing Images for Competition Entry
- Files must be named in the formats below, using an underscore between each part of the file name.

Open Entries: nn\_yyyymm\_Title\_OP.jpg

Set Subject Entries: nn\_yyyymm\_Title\_SS.jpg

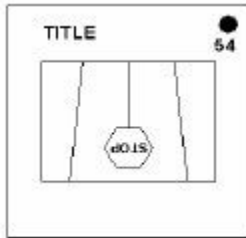
Where:

1. nn is the member's competition number (two digits). If a member's competition number is below 10, then the number should be preceded by a zero (i.e.; competition number 1 should be entered as 01).
2. yyyymm is the year and month of the competition; eg. 200806 is the June competition in 2008.
3. Title is the title of the image (multi-word titles may include spaces)
4. OP is an Open Entry
5. SS is a Set Subject Entry

Example: 01\_200806\_Fishing at Sunset\_OP.jpg

- Images are projected on a black background using PicturesToExe™ software. Images may include a border. The border must be included within the maximum horizontal and vertical dimensions.

## 2. Slides



- Slides may be masked and must be spotted as illustrated. Entries must be clearly marked with the member's competition number and the slide title. Spot the slide in the lower left corner when it is viewed the way you wish it to appear on the screen. Turn the slide and print the title and your competition number.

## COMPETITIONS

### Entering Competitions

All prints and slides, and digital projected images that are not submitted electronically via the club web site, must be accompanied by a competition entry form. An entry form is not required for images submitted for consideration for inter-club competitions. The competition entry form can be downloaded in MS Word or PDF format from the "Competitions" page.

### Intra-Club

- The intra-club competition year runs from June until May. Competitions dates are listed in the syllabus. All intra-club competitions are open subject. Each member may submit up to two entries in each section.
- Entries for the each month's competition must be submitted by the fourth Thursday of the preceding month.
- Set subject sections are held periodically. Members may submit up to two entries in any combination of formats. Dates and subjects are listed on the syllabus.
- The preferred method for submission of digital projected images is via the "Submit Digital Projected Images" facility on the "Competitions" page of the Club website. Entries will also be accepted via email or on CD or DVD.
- Images are scored out of fifteen points (no half points are awarded). Trophies are awarded for the yearly aggregate in each section.
- An image that has been entered in one section may not be subsequently entered in a different section. Images that have been previously entered, but which have been substantially changed to form a new image (eg; by cropping or manipulation) may be eligible for re-entry. Eligibility of these images is at the discretion of the competition secretary.
- Images that have scored nine points or less in a previous intra-club competition may be re-submitted in one subsequent intra-club competition. Images that have scored more

than nine points in an open subject competition may be entered in a set subject competition and vice versa.

### **Inter-Club**

- Inter-club competitions are held throughout the year. Dates, host club and pre-selection dates are listed in the syllabus. Sections, subjects and rules for these competitions are published by the inter-club competition secretary on the club website prior to the preselection date.
- Digital projected images submitted for consideration at the pre-selection must be sent to the Interclub Competition Secretary at least one week prior to the pre-selection meeting. Members should send these via the "Submit Digital Projected Images" facility on the "Competitions" page of the Club website.

### **Annual Landscape/Coastline**

- This special set subject competition is held each year in conjunction with the Annual General Meeting. Each member may submit up to four entries in any combination of formats.
- Entries must be submitted by the last Thursday in March.
- Definition: A picture featuring natural scenery of the terrain, coastal features or shoreline. A tree or trees, people or buildings may be included but should not dominate or take up a significant portion of the image. Urban landscapes are not eligible.
- Entries in this competition are eligible for the Images of the Year only if they have also been entered in an intra-club competition.

### **Members Judging Night**

- Entries from this competition may also be entered in any monthly intra-club competition, regardless of the score received, as they are not included in the yearly aggregate.
- Entries in this competition are eligible for the Images of the Year only if they have also been entered in an intra-club competition.

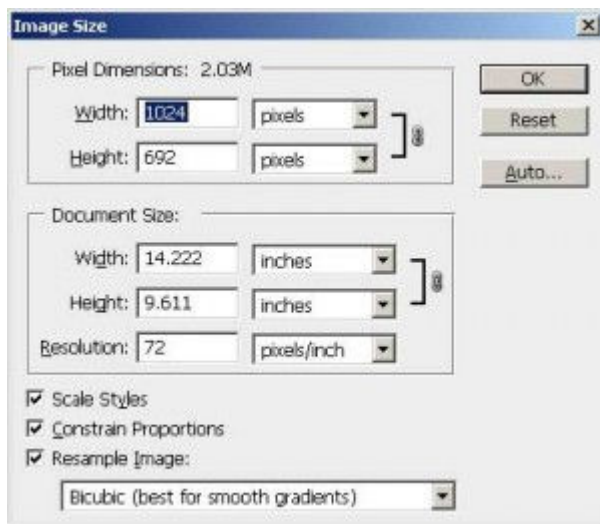
### **Images of the Year**

- The Images of the Year competition is held in all sections.
- Members may submit a maximum of four entries per section. Only images that have been entered in intra-club competitions in the current competition year are eligible.
- Entries must be submitted by the date listed in the syllabus.

## How to Resize and Save Images in Photoshop for Projected Image Competitions

This is one technique for resizing your photos for projected image competitions under the VAPS / [Corio Bay Camera Club Rules](#) .

1. After you have made all your adjustments, added borders etc. and you are happy with your image, in Photoshop go to Image -> Image size. The Image size option box will appear.

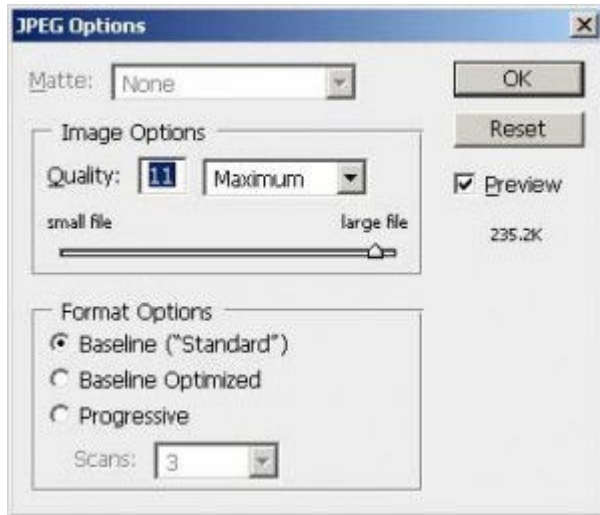


Photoshop Image Size Dialog Box

2. Ensure the "Resample Image" and "Constrain Proportions" check boxes are ticked
  3. Go to the "Resolution" box and set the resolution to between 72 and 100. 72 is normally fine for screen projection.
  4. Remember that your images must not be more than 1024 pixels wide or 768 pixels high. If your image is in "Landscape" mode, set the width in the "Pixel Dimensions" box to 1024. If it is in "Portrait" mode, set the height to 768. This will change the height or width (depending on which mode you are working in) to maintain the aspect ratio.
  5. If you are working in "Landscape" mode, and the new image height is less than 768 pixels you don't need to do anything else. If it is more than 768, change the height to 768 and let Photoshop set the width. (If you are working in "Portrait" mode the width will always be well below the maximum width)
  6. Click O.K.
  7. Go to File -> Save As
- Important: don't just go to "Save" because you will overwrite your original high resolution image and you won't be able to get it back***
8. Name your file according to the file format for club competitions.
  9. In the Format box make sure the format is JPEG. If not, select JPEG from the drop down list.

10. Chose the Folder you want to save the file into (I use a special "Competition Entries" folder) and click **Save**.

11. In the In the JPEG Quality Options box whic appears, move the slider until the number on the right is around (but no more than) 250kb.



Adobe Photoshop JPEG Options

12. Click O.K.

**Congratulations, your photo is now the correct size and ready to submit.**